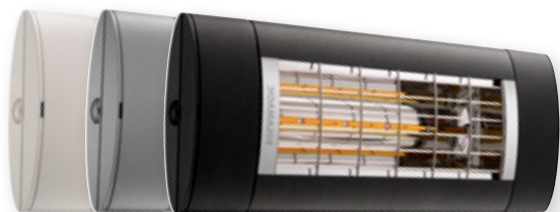


SOLAMAGIC® S1+/S3

Premium infrared heater



SOLAMAGIC®S1+

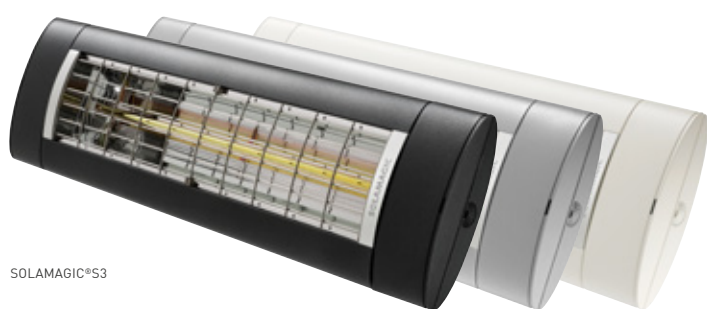
The new premium infrared heater SOLAMAGIC® S1+ is impressive - not only with the improved, glare-free heating element Solastar-HP - but also with the simple quick installation system and the integrated inrush current limitation (for 2,000 W S1 units). The casing is made of high-quality aluminum and is impressive with its noble design. The newly developed Solastar-HP heating element also combines more pleasant colour temperature and perfect thermal behavior with minimal residual light and an average service life of 5,000 h.

The SOLAMAGIC® S3 is a strong outdoor heater for your outdoor area. The device is equipped with the Solastar G2 heating element.

Especially in outdoor areas, infrared heaters allow very flexible applications and create constant, pleasant heat zones on balconies, terraces or even in outdoor catering areas. Due to a short wavelength, infrared heat radiation penetrates air particularly efficiently, is not exposed to wind drifts and guarantees high operating cost savings compared to gas heaters.

ETHERMA TIP:

Sea-air resistant special painting available on request and at extra cost.



SOLAMAGIC®S3

TECHNICAL DATA OF INFRARED HEATERS S1+ & S3

- > Voltage: 230 V
- > Output: 1400 - 2500 W*
- > Heating element S1+: Solastar-HP
- > Heating element S3: Solastar-G2
- > Colours: White, titanium, nano anthracite
- > Special colour: possible against surcharge
- > IP rating: IP 44
- > Connection cable: Plug-in cable 50 cm
- > Certification: TÜV

TECHNICAL DATA OF DIMM MODULE ARC & BT

- > Voltage: 230 V
- > Colours: White, titanium, nano anthracite
- > Special colour: possible against surcharge
- > Dimensions: 115 x 200 x 92 mm
- > Dimmer type: Phase section
- > IP rating: IP 44
- > Connection cable: Hirschmann plug-in cable

PRODUCT ADVANTAGES

- + Innovative Solastar heating element
- + New quick installation system
- + Quick release bracket for fast alignment
- + Soft start for S1+ 2000 - reduces inrush current
- + Integrated plug-in system (Hirschmann)
- + Modular design - expandable with wireless or Bluetooth dimming module

* Attention: increased starting current!



Rear S3 T-mount



Plug-in cable S1+ and S3



Back side S1+ bracket

SOLAMAGIC®S1+/S3 premium infrared heater

RG: R2 | LZ: ex stock

Type	Art. No.	Output [W]	Width [mm]	Height [mm]	Depth (incl. holder) [mm]	Price €
SM-S1-PLUS-1400-W	9300171	1400	520	200	92 (231 mm)	379.10
SM-S1-PLUS-1400-T	9300170	1400	520	200	92 (231 mm)	379.10
SM-S1-PLUS-1400-NA	9300169	1400	520	200	92 (231 mm)	379.10
SM-S1-PLUS-2000-W	9300177	2000	520	200	92 (265 mm)	413.80
SM-S1-PLUS-2000-T	9300176	2000	520	200	92 (265 mm)	413.80
SM-S1-PLUS-2000-NA	9300175	2000	520	200	92 (265 mm)	413.80
SM-S3-2500-W	9300109	2500	750	200	92 (230 mm)	572.30
SM-S3-2500-T	9300110	2500	750	200	92 (230 mm)	572.30
SM-S3-2500-NA	9300111	2500	750	200	92 (230 mm)	572.30

W: white T: titanium NA: nano anthracite